

# service unit combination

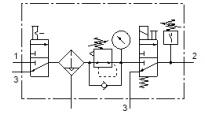
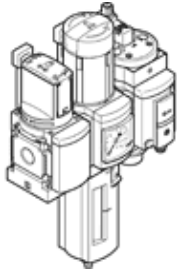
## MSB6-1/2:C3:J1:D14-WP

Part number: 8025359

★ Core product range

FESTO

Maximum output pressure 10 bar, 40 µ filter, with pressure gauge, lockable regulator head, plastic bowl with plastic bowl guard, manual condensate drain, flow direction from left to right.



### Data sheet

| Feature                                 | Value  |
|---|--|
| Size                                    | 6  |
| Series                                  | MS   |
| Actuator lock                           | Rotary knob with lock with accessories, lockable   |
| Assembly position                       | Vertical +/- 5°  |
| Grade of filtration                     | 40 µm  |
| Condensate drain                        | manual rotary  |
| Design structure                        | On/off valve<br>Filter regulator with pressure gauge   |
| Controller function                     | Output pressure constant<br>with initial pressure compensation<br>with secondary exhaust<br>with return flow |
| Bowl guard                              | Plastic guard  |
| Pressure gauge                          | with pressure gauge  |
| Operating pressure                      | 0.8 ... 18 bar   |
| Pressure regulation range               | 0.5 ... 10 bar   |
| Standard nominal flow rate              | 4,000 l/min  |
| Operating medium                        | Compressed air in accordance with ISO8573-1:2010 [7:4:4]<br>Inert gases                                      |
| Note on operating and pilot medium      | Lubricated operation possible (subsequently required for further operation)                                  |
| Corrosion resistance classification CRC | 2 - Moderate corrosion stress  |
| Storage temperature                     | -10 ... 60 °C  |
| Food-safe                               | See Supplementary material information   |
| Air purity class at output              | Compressed air in accordance with ISO8573-1:2010 [7:4:4]   |
| Medium temperature                      | 0 ... 50 °C  |
| Ambient temperature                     | 0 ... 50 °C  |
| Product weight                          | 2,000 g  |
| Mounting type                           | with accessories   |
| Pneumatic connection, port 1            | G1/2   |
| Pneumatic connection, port 2            | G1/2   |
| Pneumatic connection, port 3            | G1/2   |
| Materials note                          | Conforms to RoHS   |
| Material housing                        | Aluminium die cast   |
| Material bowl                           | PC   |