

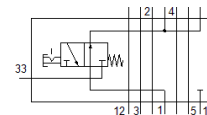
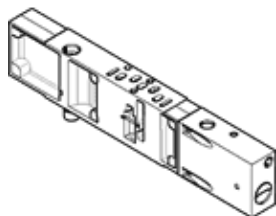
# vertical pressure shut-off plate

## VABF-S4-2-L1D1-C

Part number: 542884

FESTO

For valve terminals VTSA and VTSA-F, standard port pattern to 15407-2, for mounting between manifold sub-base and valve, supply pressure of the terminal is blocked. Dismantling of the valve is possible without shutting off the pressure of the terminal.



## Data sheet

Feature	Value
Width	18 mm
Based on the standard	ISO 15407-2
Assembly position	Any
Operating pressure	3 ... 10 bar
CE mark (see declaration of conformity)	to EU directive low-voltage devices
Operating medium	Compressed air in accordance with ISO8573-1:2010 [7:4:4]
Note on operating and pilot medium	Lubricated operation possible (subsequently required for further operation)
Corrosion resistance classification CRC	0 - No corrosion stress
Protection class	IP65 NEMA 4
Pilot medium	Compressed air in accordance with ISO8573-1:2010 [7:4:4]
Ambient temperature	-5 ... 50 °C
Product weight	209 g
Vertical stacking type of mounting	on manifold block on individual sub-base
Material housing	Aluminium die cast